

Unpacking	2
Your Phone	3
<i>2 Phone Layout</i>	3
<i>2 Overview</i>	4
<i>2 Host System Requirements</i>	4
<i>2 Specifications</i>	4
Getting Started	5
<i>Step 1: Connect the USB Phone to PC</i>	5
<i>Step 2: Install the Latest Skype™</i>	5
<i>Step 3: Install the USB Phone Driver: Skype@phone</i>	5
USB Phone Test	7
Update the USB Phone Driver	9
General Functions	10
<i>2 Make a Skype call</i>	10
<i>2 Make a SkypeOut call</i>	10
<i>2 Receive a Skype call</i>	10
<i>2 End a call</i>	10
<i>2 Set the USB phone Mute</i>	10
<i>2 Select your favorite melody</i>	11
<i>2 Adjust the Volume</i>	11
Trouble Shooting	12

# Unpacking

When you receive your USB phone SX-06, please check to make sure that your package contains the following items:

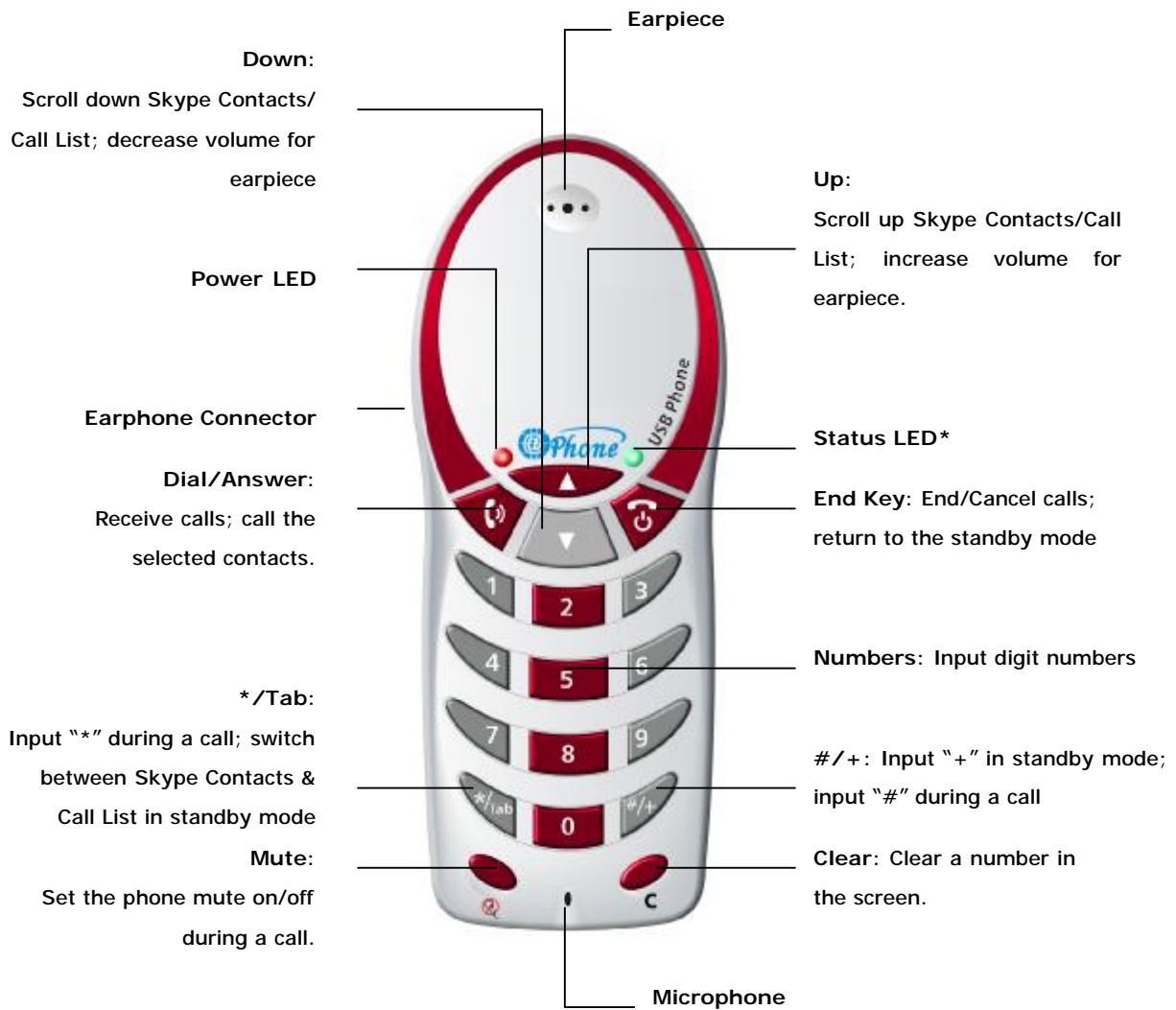
	One USB handset
	One installation CD
	One mini USB cable
	One user manual*
	One earphone

**Note:**

This user manual is written for the USB phone driver (Version 0.9.2.0)

# Your Phone

## 2 Phone Layout



**Notes:**

- Status LED:** Flash quickly when there is an incoming call.  
Flash slowly when the USB Phone has been set mute during a call.

# Your Phone

## 2 Overview

SX-06 is a high quality USB hand phone with 4-polyphonic ring tones. Its fashionable appearance, easy-to-use design and euphonious melody will set you apart from others. Just plug it into your PC or laptop, and then you can enjoy the full features of Skype™.

### Features:

- ü 12 classical 4-polyphonic ring tones catering to different tastes.
- ü Rings loudly on an incoming call.
- ü Fully functional keypad enables you to make/receive calls even easier.
- ü Power LED and Status LED.
- ü Mic. mute button to protect your privacy.
- ü Supplied earphone for hands-free operation.
- ü Acoustically isolated earpiece and microphone to eliminate echo.
- ü Full-duplex communication with crystal clear sound.
- ü USB interface PnP. No external power/sound card needed.

## 2 Host System Requirements

- ü Microsoft Windows 2000/XP
- ü Pentium 400MHz above processor/128MB RAM/16MB free hard disk capacity.
- ü One USB port available
- ü Internet connection (ADSL, Cable Modem, Dial-Up, Wireless LAN)

## 2 Specifications

Weight	85g
Dimensions	48mm*120mm*24mm
USB Port	Mini USB A-type
Earphone Connector	2.5mm
Voltage	4~5.25 V
Operating Humidity	5~95%RH
Operating Temperature	0~40℃

## Getting Started

### Step 1: Connect the USB Phone to PC

The hardware installation is very simple. All you need to do is to connect the USB phone to the USB port on your PC with the mini USB cable. The red Status Power LED on the phone will be on.

### Step 2: Install the Latest Skype™

The USB phone must work with Skype™ Rev. 1.3.0.55 or later. If your Skype™ is outdated, please download the latest version of Skype™ software from its official website [www.skype.com](http://www.skype.com).

However, how to use Skype™ is not included in this manual. For more detailed information about Skype™, please visit its official website [www.skype.com](http://www.skype.com)

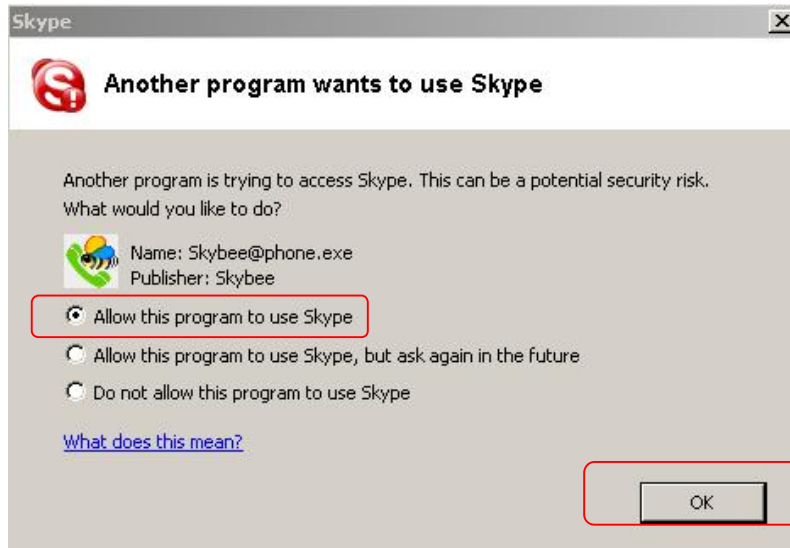
### Step 3: Install the USB Phone Driver: Skype@phone

You can insert the supplied installation CD into your PC or download the latest version of driver "Skype@phone" from [www.phoneskype.com](http://www.phoneskype.com)

After the installation, please **RESTART WINDOWS**.




# Getting Started

If Skype@phone is run for the first time, Skype™ will pop up the following window. Please select **"Allow this program to use Skype"** as the illustration shown below:

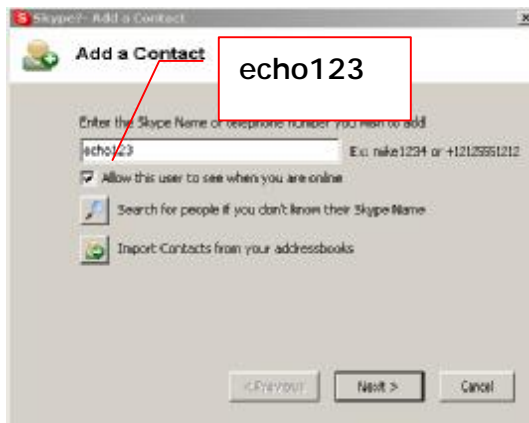



Now you are ready to make/receive calls with the USB phone.

## The indications of tray icon for USB phone driver


-  The USB Phone works normally.
-  The USB phone fails to communicate with Skype™. (Please refer to "Trouble Shooting in this manual")
-  The USB phone fails to communicate with your computer. (Please refer to "Trouble Shooting" in this manual.)

# USB Phone Test



To test your USB phone, please click the icon  to add *echo123* to your Skype Contacts.



After adding *Echo123* to your Skype Contacts, start chat with him by clicking the icon .




Input "callme" and press "Enter" on your keyboard.

# USB Phone Test



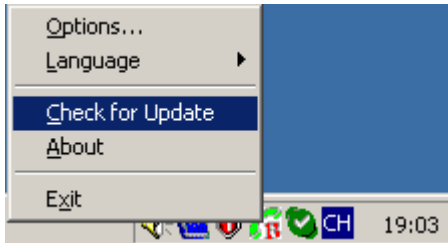
Wait for a moment and *echo123* will call you soon.


If the USB Phone has been correctly connected to the PC, you will hear the melody ring tone. You can receive this call by pressing  ("Dial/Answer").



## Update the USB Phone Driver




Please remember to update the USB phone driver regularly. You can follow this guideline here:



Right click the icon  and choose "*Check for Update*".

## General Functions

### 2 Make a Skype call

Use  /  ("Up/Down") on your phone to scroll up/down and select the contact that you want to call, and then press  ("Dial/Answer").



### 2 Make a SkypeOut call

Directly press  ("#/+") + "country code" + "city code" + "phone number".


Examples:

(Here we use the country code "1" for calling USA): +1 555 1234567


**Note:** For more detailed usages of making a SkypeOut call, please visit Skype's official website: <http://www.skype.com>.

If you input a wrong number, please press   to clear it.

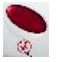
### 2 Receive a Skype call

Press  ("Dial/Answer") to receive calls.

### 2 End a call

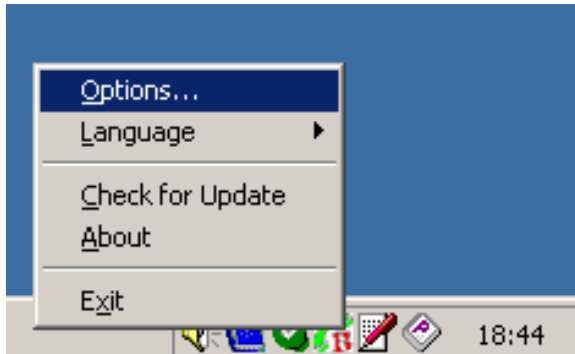
Press  ("End Calls") to end a call.


### 2 Set the USB phone Mute

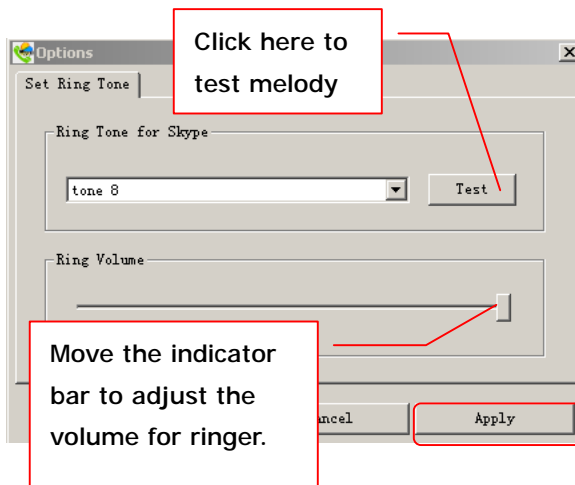
Press  ("Mute") to set the phone mute during a call. (When the phone has been set mute, the green Status LED will flash slowly.)

# General Functions

## 2 Select your favorite melody





To select your favorite melody, please right click the tray icon  and choose "Options".



Then, you will see this window in which you can select or test melodies, as well as adjust the volume of melody.



## 2 Adjust the Volume




Press  /  ("Up"/"Down") to turn up/down the volume for the USB phone during a call.


# Trouble Shooting

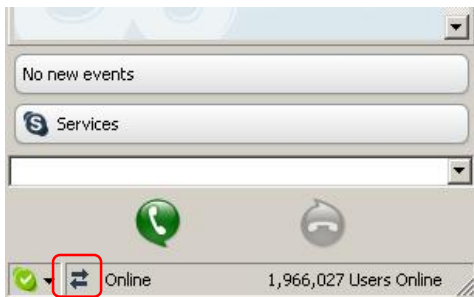
For latest information about the Trouble Shooting and the FAQ, please visit <http://www.phoneskype.com/support.htm>

**Q1: Why did I see the icon  rather than  in the taskbar? What's wrong with the driver software?**

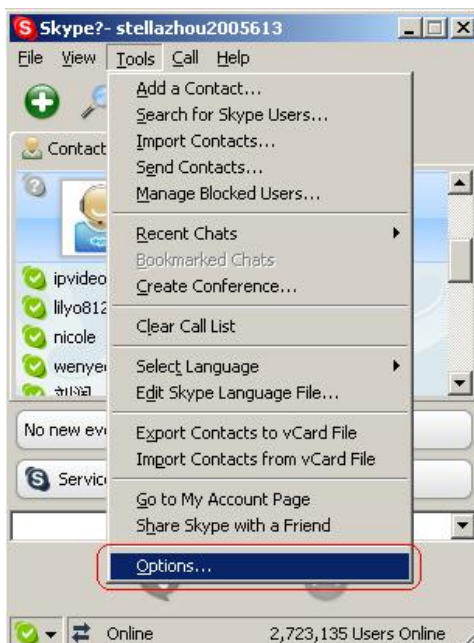
▶ If you see the icon ,

1) please check whether Skype™ is running at the moment. If not so, please run Skype™;

2) please check whether you can see the icon  in the Skype™ Windows if Skype™ is running.

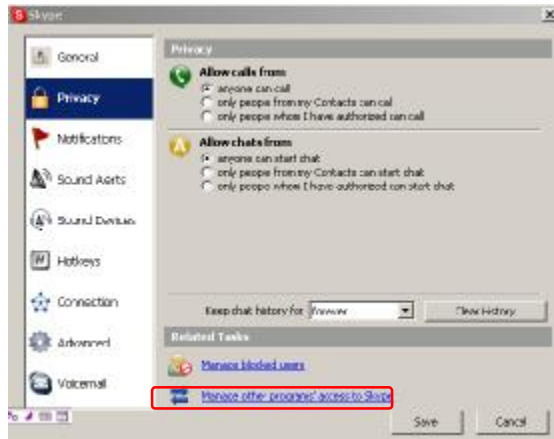


But if you cannot see this icon, please follow the steps:

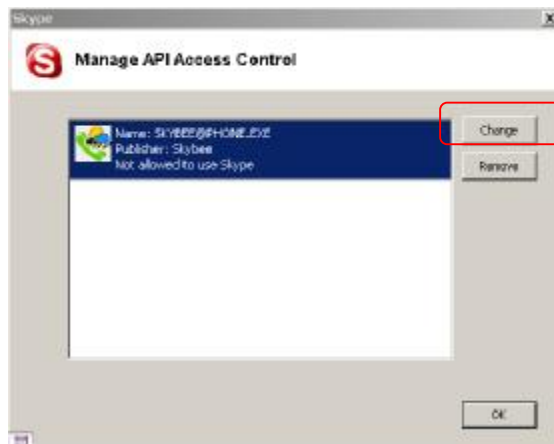


**Step1: "Tools" –"Options".**

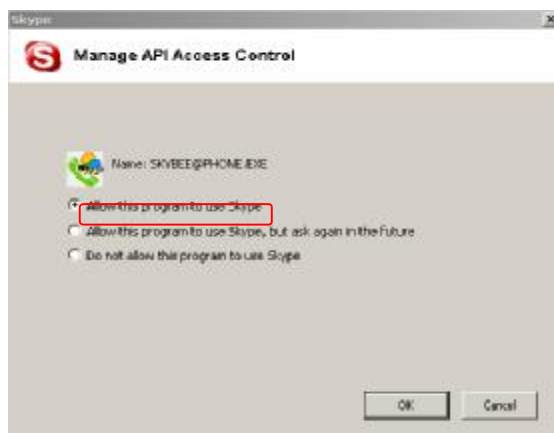
# Trouble Shooting



Step 2: "Privacy"--"Related Task: Manage other program's access to Skype".




Step 3: Choose "Change"



Step 4: Choose "allow this program to use Skype"

## Trouble Shooting

Q2: After turning on the computer, I see the icon  . Why?

▶ There are two possible causes if you see the icon  :

- 1) The USB phone fails to communicate with your PC. Please check whether the USB port is in a normal state.
- 2) The USB phone fails to work normally in Windows. You may need to reinstall the device driver. Please follow the steps below:

*"Start"—"Setting"—"Control Panel"—"System"—"Hardware"—"Device Manager"*

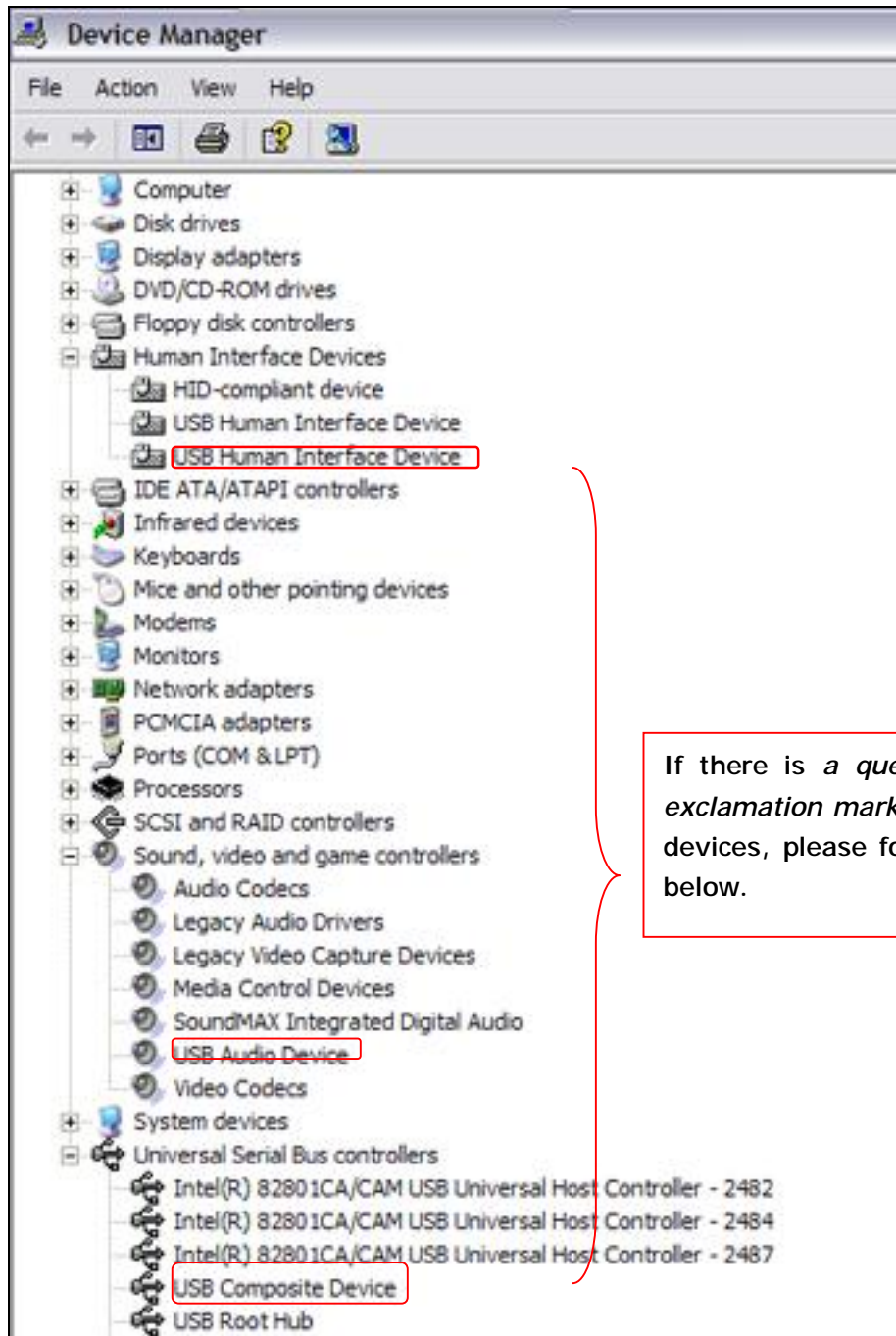
Then, you will see the following window. Please check whether these three devices below are in a normal state.

*"USB Human Interface Device",*

*"USB Audio Device"*

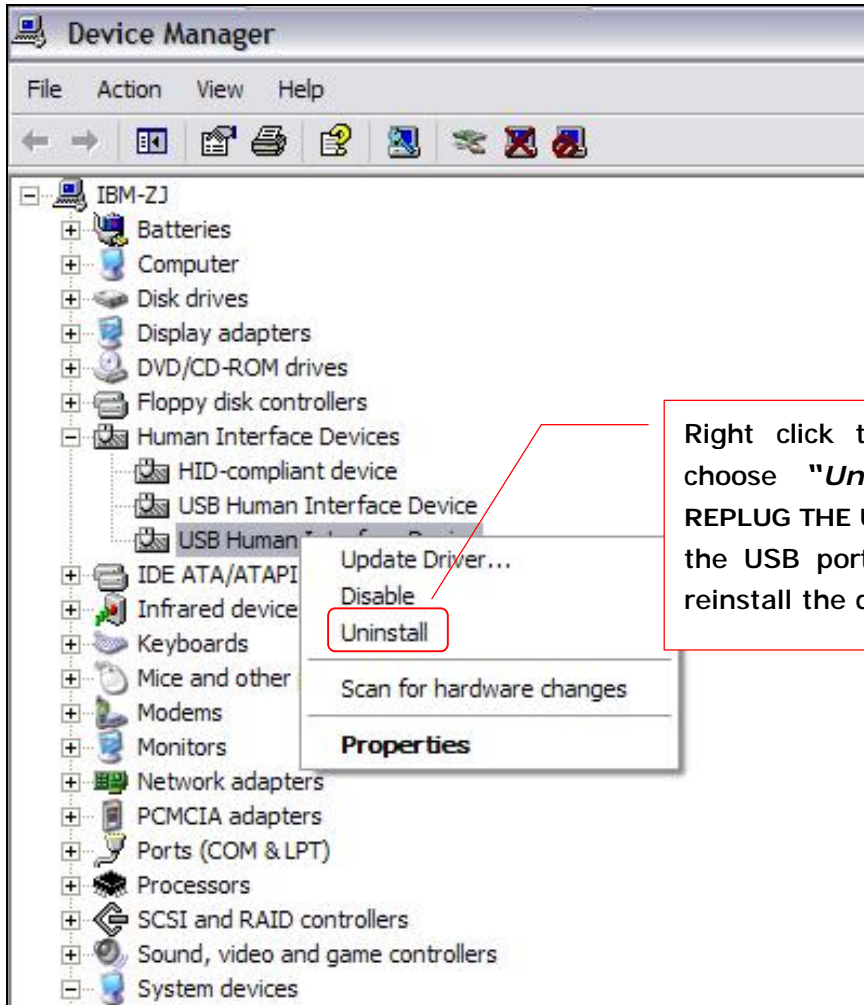
*"USB Composite Device"*

# Trouble Shooting



If there is a *question mark* or an *exclamation mark* with one of these devices, please follow the guideline below.

# Trouble Shooting



Right click the device and choose **"Uninstall"**. Then **REPLUG THE USB PHONE** into the USB port. Windows will reinstall the device driver.