



**Continuous Ink Supply System
For Epson Stylus
C63\C64\C65\C66\C83\C84\C86\CX6300
\CX6400 Printer
Installation Instruction**

For XM Empty Cartridge Version

With Auto Reset Chips

The whole operation is very easy. It's really an effective tool to save your money.

I. What's in the XM-C63 Continuous Ink Supply system?

- 1) 4 * 100ml Reservoir Bottles;
- 2) Tubing Attached with Cartridge and Chips;
- 3) A set of Support Arm & Black Rubber;
- 4) 4 * Vacuum Pump (Filling tools).



READ ALL INSTRUCTION PRIOR TO INSTALLING YOUR NEW SYSTEM

Thank you for purchasing XM Continuous Ink Supply System. We appreciate your support and will try our best to make your experience with our products a pleasant one. Printing has been a different experience ever since you installed XM Continuous Ink Supply system on your own printer. Just imagining being able to print without regard to the ink level in those expensive little cartridges.

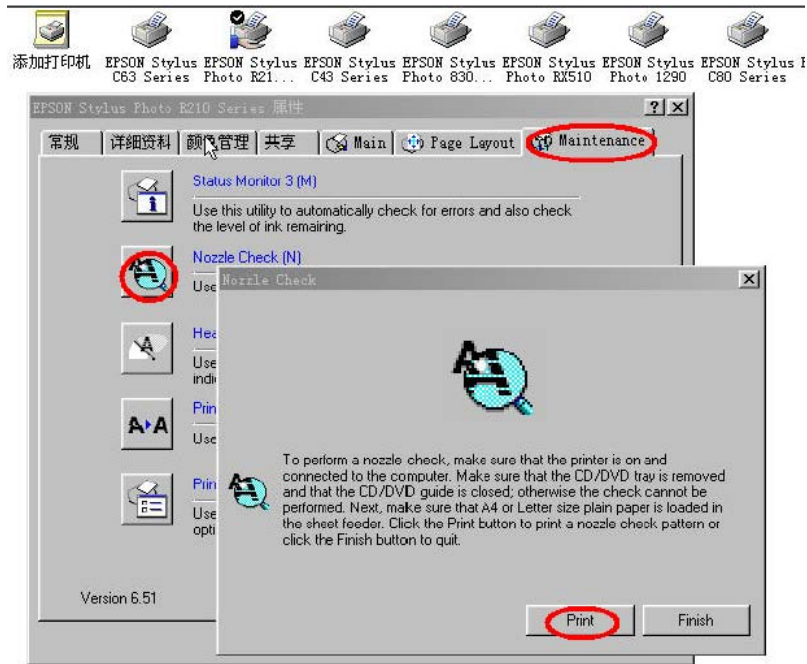
Please take your time installing XM Continuous Ink Supply system. Do not remove your old cartridge until you have the XM CIS system primed and ready to install (to prevent the drying of heads). In addition, make sure you are getting perfect nozzle checks before installing the XM CIS system. The XM CIS system won't be able to work properly if the nozzles are previously clogged.

Most people get a perfect nozzle check the first time after installing the XM Continuous Ink Supply system; others may need to run two or three cleaning cycles or let the printer sit for a while before they get the perfect results.

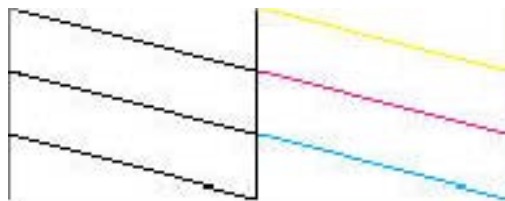
II. Getting Started

1. Check the printer head before beginning the installation.

- 1) Open the window of the Computer and find the Control Panel. Then click “Printer and Other Hardware”
- 2) Click the right button of mouse on EPSON Stylus C63 Series. Then click the Properties and choose the “Nozzle Check” as the below picture shown.



- 3) Using the EPSON Utility, print a “ Nozzle Check” to make sure that all the nozzles are firing properly.



2. Press the “ink cartridge replace button” (Picture A) on the printer to move the cartridge to the cartridge remove position (Picture B).



(Picture A)



(Picture B)

3. Unplug the power connector at the back of the printer (Picture A); This will prevent the printer from “auto powering down”, allowing you have as much time as you need to complete the installation. Remove the original cartridges from the cartridge carrier as picture B shown; Then Use a small screwdriver to remove the original cover (Picture C)



(Picture A).



(Picture B)



(Picture C)

4. Pull out the larger white silicon plugs of the Reservoir bottles and fill the ink into it one by one; please pay attention to the color sticker at the bottom of Reservoir Bottles and fill ink according to the sticker's color (Picture A). After finishing ink-filling, cover the ink-filling hole and plug out the cap of ventilation hole as the picture B shown.



(Picture A)



(Picture B)

5. Insert the Air filter into the ventilation hole to let the air in when the printer is working, meanwhile keep the dust out of the bottles.



6. Firstly use a needle to poke the film of the cartridge (Picture A). Then insert the vacuum pump into the holes of Cartridge as the below picture shown and pull the plunger backward as (Picture B); Stop pulling the plunger till ink flows into the vacuum pump;



(Picture A)



(Picture B)

7. Measure 13cm from the edge of the printer and make a mark: then tear off the sticker (Picture A) and attach Support Arm to the printer as the Picture B shows.

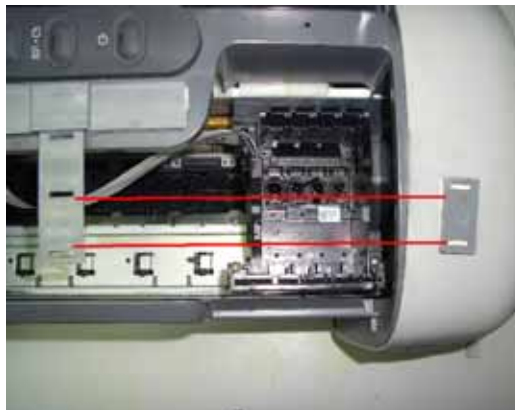


(Picture A)



(Picture B)

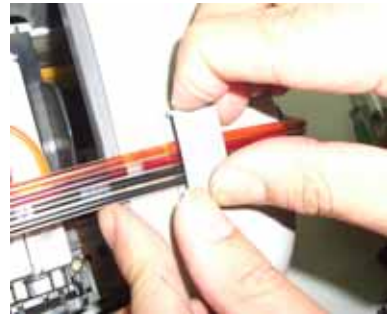
8. Attach the small tube clamp at the right of the printer and Make sure it is parallel with the Support Arm as the below picture shown.



9. Insert the cartridge into the cartridge carriage after finishing ink-filling; Make sure the cartridge is down all the way and they are making contact with the fingers that read chips;



10. Put the Tube into the Support Arm and Small Tube clamp as the below picture shown.



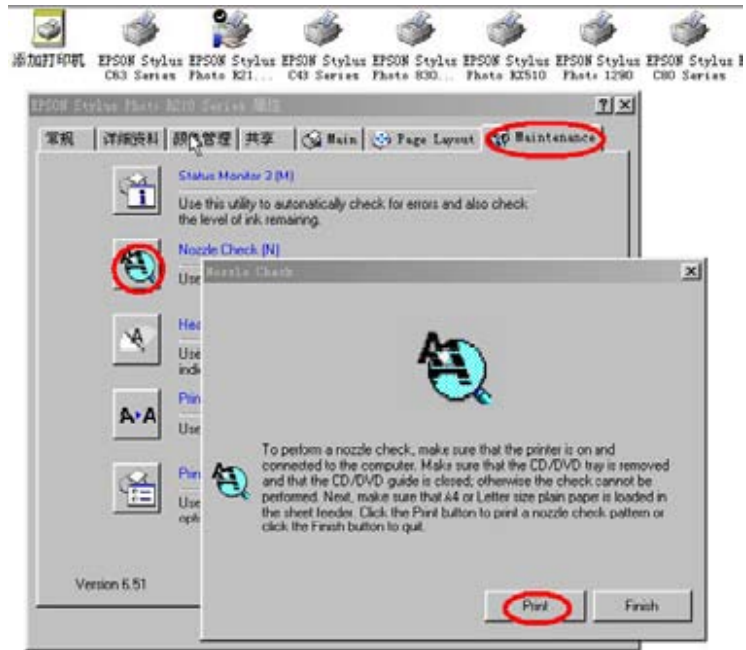
11. Slide the cartridge back and forth from left to right several times; make sure the tubes not too tight when cartridge is in the far right and left position.



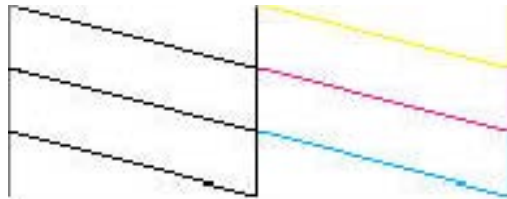
Now everything is put together! Double check your cartridge; then turn on the power. Watch for anything unusual. You are ready to start printing.

III. Nozzle Check

12. Turn on the power and clean the printer head for two or three times as the following picture shown.



13. Print the “Nozzle Check” paper and if the print effect shown as the following picture, you can start printing.



IV. Auto Reset Procedure

14. When the indicator light on printer shows short of ink or change cartridges (Picture A); Please turn off the printer for about 30 seconds, then switch it back on. At this time the Ink meter bar shall show 99% (Picture B). You can start printing as usual.





(Picture A)

(Picture B)

Notice:

1. Please don't take out cartridge at random after installing the CIS system. Keep the reservoir bottles on the same level with the printer.
2. Try to keep at least 1/2 inch of ink in the bottles, as you don't want to run out of ink and draw air into the cartridge.
3. Don't place the Reservoir Bottles higher or lower much than the printer.
4. To be used in a dry place between 15 and 35degree. Avoid exposure to direct sunlight.
5. Don't put the continuous ink supply systems reversed or leaning during the shipment. Please make sure all the ink filling holes and Ventilation holes are closed tightly during the transportation. Otherwise, the ink shall leak out.
6. Don't sway the cartridge frequently. It may cause ink leakage.
7. Don't pull out the connector of cartridge and don't tear off adhesive tape at the bottom of cartridge.

Warning:

1. Not drinkable; keep it out reach of children.
2. Avoid exposure to direct sunshine and don't keep it in high or freezing temperature.
3. Avoid collision and fallen down.